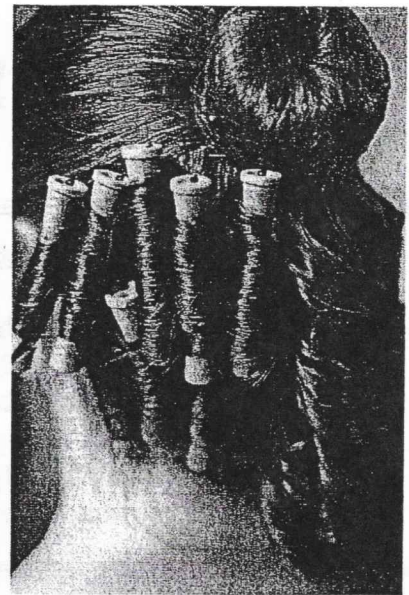
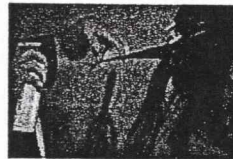
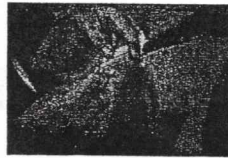


# Curl Guidelines

## Perm Rods

When using perm rods take small or thin sections and roll them vertically towards the face using the center of the head as your turning point. Make sure hair is dry if you use perm rods. Using grey rods or peach colored rods are the best sizes to get a nice ringlet. After you section the hair spray it with hairspray use perm papers and cover the hair sliding it to the end of the strand. Paper will help prevent the hair from sticking to the rod from the hairspray. After the paper is at the end of the hair strand spray it again and roll the hair onto the rod. 2 to 4 rows up are common using this method. It is normal that the rods will partially cover the lower layer of rods as you go up each layer. Always start at the bottom of the head working your way up to the bun. Spray the rods several times after you have finished rolling and let them dry a minimum of 2 hours is required to get a good hold. This method is usually for those who want to do it early and leave the rods in the hair overnight or early in the morning and taking them out right before the show. You can always touch up curls or pin them after your performance to hold them for the next show.



## ALL PARTS WITH CURLS

The top 1/3 of your hair needs to be pulled straight back away from your face and placed in a small bun. Using a hair net to secure fly-away hairs is recommended.

## "Falls" or Fake Curls

Hair Secrets in Fairlawn Plaza Mall ~ \$20-\$25

Need to place order and get your hair matched no later than October 15 to ensure delivery

## Curling Iron ~ 1/2 Inch

If you use a curling iron PLEASE REMEMBER to NOT spray your curl while the hair is on the iron this can cause a fire. Especially with the new irons that have no temperature control. Spray hair after you section the strand then roll it onto the iron always going towards the face from the center of the back of head. Open the clamp of the iron and gently pull the iron down out of the curl keeping the iron at the angle of the curl so it will hold the formation of the ringlet. Spray the curl again while it's hot and again once you have completed the head.

